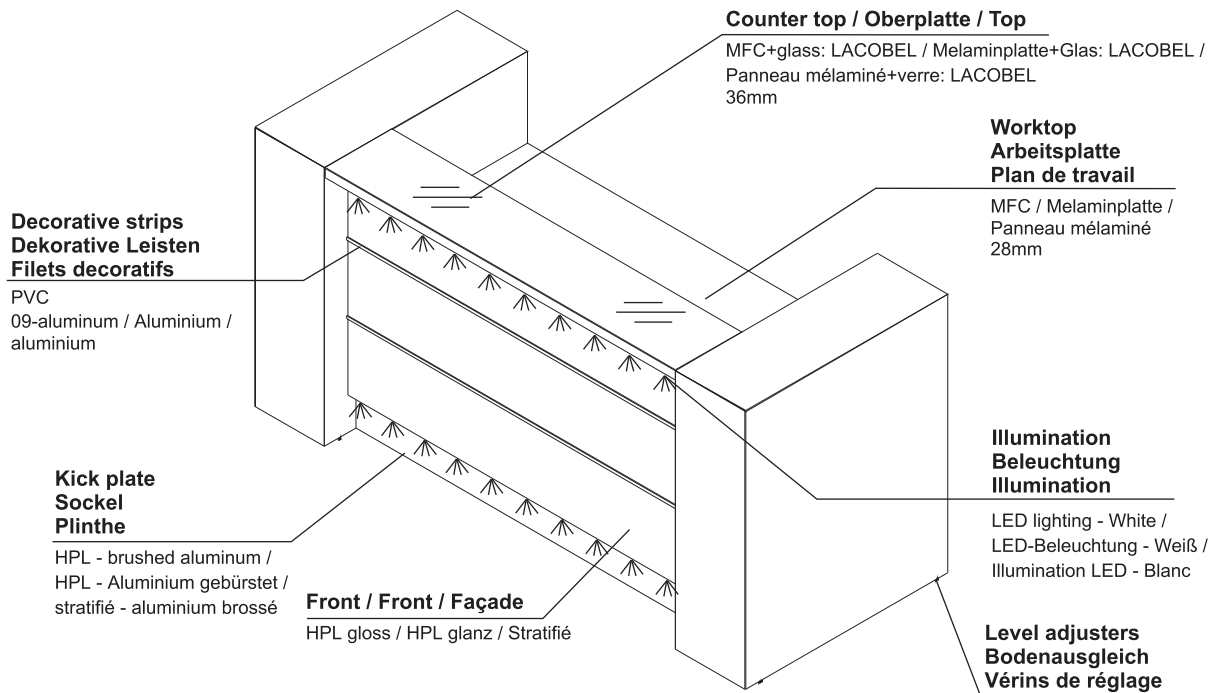


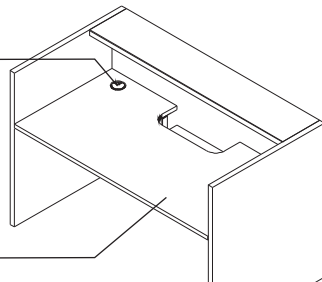


TECHNICAL SPECIFICATION / TECHNISCHE BESCHREIBUNG / DESCRIPTION TECHNIQUE



**Cable-way
Kabeldurchlass
Obturateur**
ø 80mm

**Worktop with optional
monitor shelf(160 EURO)
Arbeitsplatte mit
Monitorboden (als Option)
Plan de travail avec support
moniteur en option**



Side panel / Wangenfuß / Pied latéral

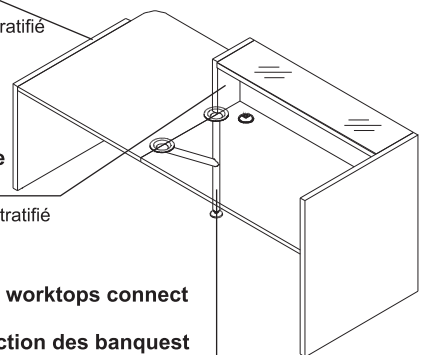
HPL gloss / HPL glanz / Stratifié
38mm

**Side panel
Wangenfuß niedrig
Pied latéral**

HPL gloss / HPL glanz / Stratifié
38mm

**Side panel
Endungselement
Element de finition de
la rehausse**

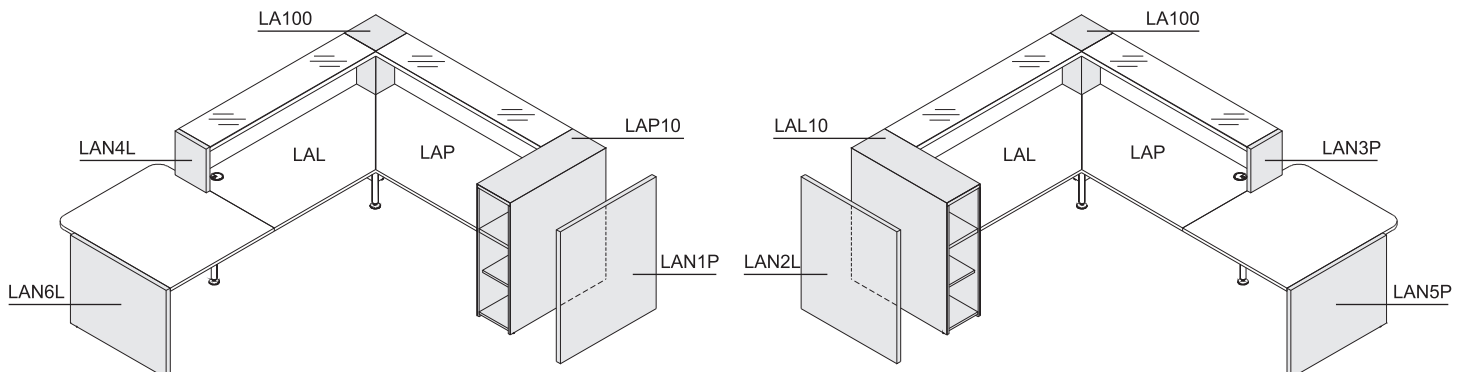
HPL gloss / HPL glanz / Stratifié
38mm



**Supporting leg where worktops connect
Stützfuß
Nécessaire sur la jonction des banquettes**

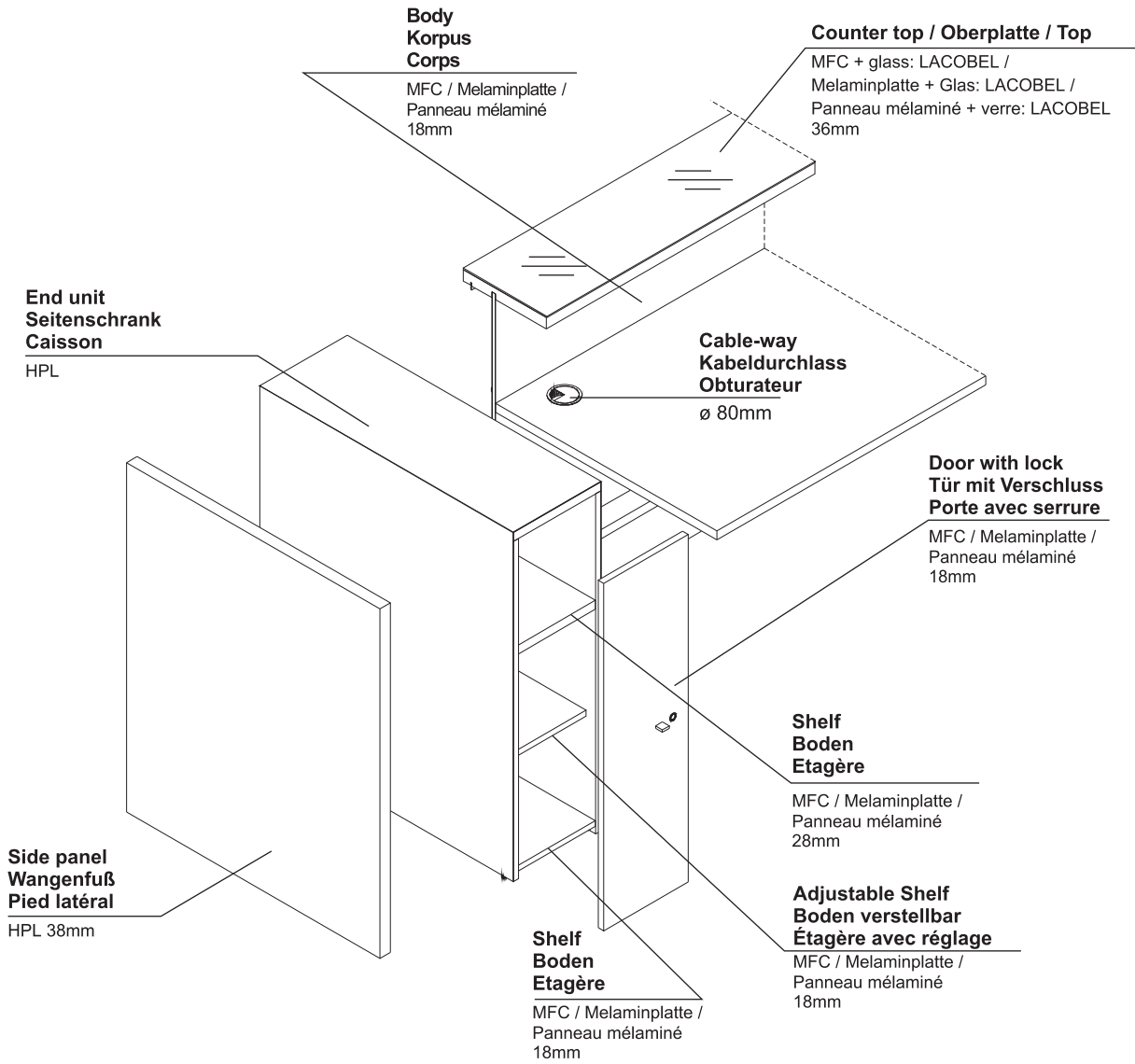
NL41 required on all connections of receptions /
NL41 Stützfuß zusätzlich zur Verbindung der
Thekenelemente bestellen /
NL41 nécessaire sur la connexion des banquettes

METAL, HIGH GLOSS WHITE
METALL, WEIß GLANZ
METAL, BLANC BRILLANT

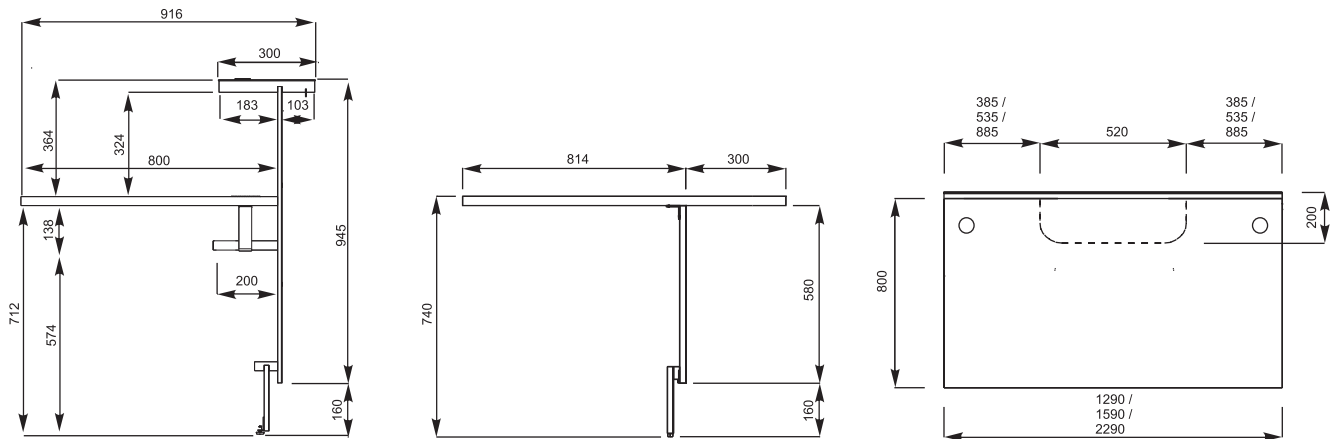




TECHNICAL SPECIFICATION / TECHNISCHE BESCHREIBUNG / DESCRIPTION TECHNIQUE



DIMENSIONS / ABMESSUNG / DIMENSIONS





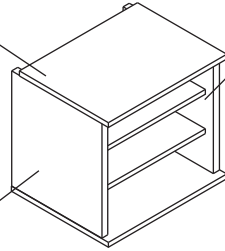
TECHNICAL SPECIFICATION / TECHNISCHE BESCHREIBUNG / DESCRIPTION TECHNIQUE

Top Oberplatte Plateau

MFC / Melaminplatte /
Panneau mélaminé
12mm

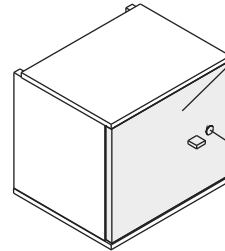
Body Korpus Corps

MFC / Melaminplatte /
Panneau mélaminé
18mm



Shelf Boden Plateau

MFC / Melaminplatte /
Panneau mélaminé
12mm



Door Tür Porte

MFC / Melaminplatte /
Panneau mélaminé
18mm

Lock / Verschluss / Serrure

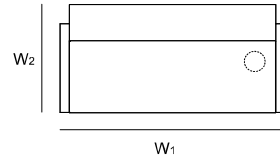
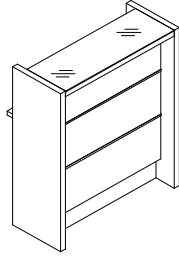
- central lock
- Zentralverschluss
- serrure centralisée

FINISHES / FARBEN / FINITIONS

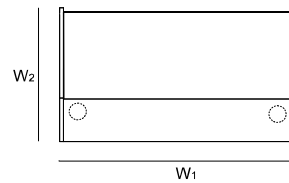
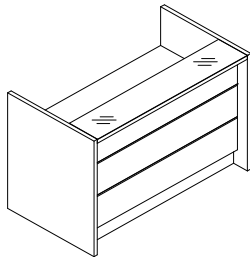
<p>73-HIGH GLOSS WHITE WEIß GLANZ BLANC BRILLANT</p> <p>148-HIGH GLOSS GRAY GRAU GLANZ GRIS BRILLANT</p>	
<p>GLASS LACOBEL, WHITE GLAS LACOBEL, WEIß VERRE LAQUÉ LACOBEL, BLANC</p> <p>67-WHITE PASTEL WEIß PASTELL BLANC PASTEL</p>	
<p>GLASS LACOBEL, WHITE GLAS LACOBEL, WEIß VERRE LAQUÉ LACOBEL, BLANC</p> <p>26-ALUMINIUM SATINATO ALUMINIUM SATINATO ALUMINIUM SATINE</p>	
<p>67-WHITE PASTEL WEIß PASTELL BLANC PASTEL</p>	
<p>31-CANADIAN OAK KANADISCHE EICHE CHENE CANADIEN</p> <p>34-CHESTNUT WENGE WENGE</p> <p>73-HIGH GLOSS WHITE WEIß GLANZ BLANC BRILLANT</p> <p>74-HIGH GLOSS ORANGE ORANGE GLANZ ORANGE BRILLANT</p>	
<p>80-HIGH GLOSS LIME GRÜN GLANZ VERT BRILLANT</p> <p>81-HIGH GLOSS BURGUNDY DUNKELROT GLANZ BORDEAUX BRILLANT</p> <p>102-HIGH GLOSS YELLOW GELB GLANZ JAUNE BRILLANT</p> <p>127-HIGH GLOSS FUCHSIA PINK GLANZ ROSE BRILLANT</p>	<p>NL41</p>
<p>15-HIGH GLOSS WHITE WEIß GLANZ BLANC BRILLANT</p>	
<p>26-ALUMINIUM SATINATO ALUMINIUM SATINATO ALUMINIUM SATINE</p> <p>67-WHITE PASTEL WEIß PASTELL BLANC PASTEL</p>	



RECEPTION DESK SYSTEMS / EMPFANGSTHEKEN-SYSTEME / CONFIGURATIONS DES BANQUES

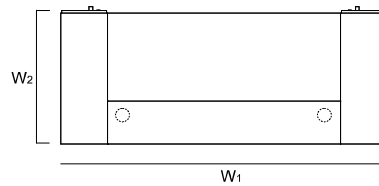
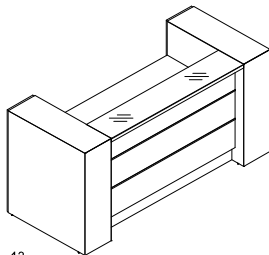


INDEX SYMBOL	DIMENSIONS / ABMESSUNGEN [mm]						⚖️ kg	📦 m3	📦 pcs	COMMENTS / BEMERKUNGEN / REMARQUES
	W ₁	W ₂	D ₁	D ₂	H					
LAV96L	920	454	-	-	1105		51.5	0.182	7	



09
13
16
LAN1P+LA23L+LAN2L

INDEX SYMBOL		DIMENSIONS / ABMESSUNGEN [mm]						⚖️ kg	📦 m3	📦 pcs	COMMENTS / BEMERKUNGEN / REMARQUES
		W ₁	W ₂	D ₁	D ₂	H					
LAV95L	09	920	917	-	-	1105		88.0	0.252	6	
LAV75L	13	1366	917	-	-	1105		127.6	0.369	8	
LAV76L	16	1666	917	-	-	1105		145.5	0.424	8	
LAV77L	23	2366	917	-	-	1105		182.0	0.584	9	



13
16
LAD10+LAP10+LA23L+LAL10+LAD10

INDEX SYMBOL		DIMENSIONS / ABMESSUNGEN [mm]						⚖️ kg	📦 m3	📦 pcs	COMMENTS / BEMERKUNGEN / REMARQUES
		W ₁	W ₂	D ₁	D ₂	H					
LAV01L	13	1926	937	-	-	1105		185.6	1.031	10	
LAV02L	16	2226	937	-	-	1105		203.5	1.087	10	
LAV03L	23	2926	937	-	-	1105		240.0	1.246	11	

DESCRIPTION / LEGENDE / LÉGENDE:

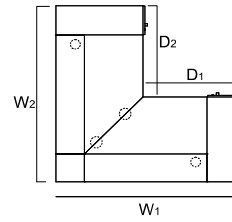
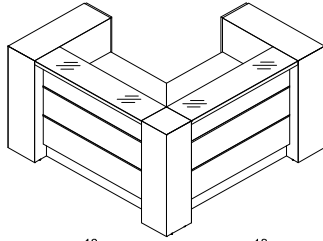
⚖️ net weight / Nettogewicht / poids net

📦 volume / Volumen / le volume

📦 number of packages / Stückzahl der Pakete / nombre de colis

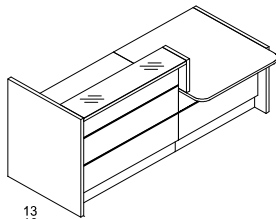


RECEPTION DESK SYSTEMS / EMPFANGSTHEKEN-SYSTEME / CONFIGURATIONS DES BANQUES



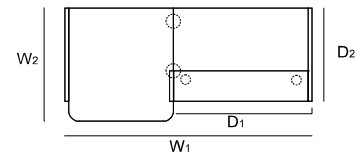
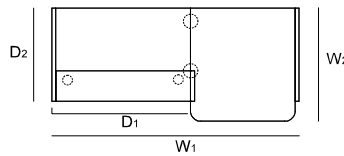
LAD10+LAP10+LAP23L+LA100+NL41+LAL23L+LAL10+LAD10

INDEX SYMBOL	DIMENSIONS / ABMESSUNGEN [mm]						⚖️	📦	📦		COMMENTS / BEMERKUNGEN / REMARQUES
	W ₁	W ₂	D ₁	D ₂	H						
13 LAV10L 13	1908	1908	991	991	1105		242.4	1.394	15		
13 LAV11L 16	1908	2208	991	1291	1105		262.3	1.452	17		
13 LAV12L 23	1908	2908	991	1991	1105		288.8	1.591	18		
16 LAV13L 13	2208	1908	1291	991	1105		262.3	1.452	17		
16 LAV14L 16	2208	2208	1291	1291	1105		270.2	1.488	15		
16 LAV15L 23	2208	2908	1291	1991	1105		302.7	1.638	18		
23 LAV16L 13	2908	1908	1991	991	1105		288.8	1.591	18		
23 LAV17L 16	2908	2208	1991	1291	1105		302.7	1.638	18		
23 LAV18L 23	2908	2908	1991	1991	1105		323.2	1.767	17		



A

B



A: LAN1P+LA23L+NL41+LAN4L+LAU11L+LAN6L
 B: LAN5P+LAU11L+NL41+LAN3P+LA23L+LAN2L

INDEX SYMBOL		DIMENSIONS / ABMESSUNGEN [mm]						⚖️	📦	📦		COMMENTS / BEMERKUNGEN / REMARQUES
A	B	W ₁	W ₂	D ₁	D ₂	H						
13 LAV19L 13	13 LAV20L 13	2366	1114	1328	917	1105		138.9	0.509	12		
16 LAV21L 16	16 LAV22L 16	2666	1114	1628	917	1105		152.3	0.556	12		
23 LAV23L 23	23 LAV24L 23	3366	1114	2318	917	1105		178.8	0.695	13		

DESCRIPTION / LEGENDE / LÉGENDE:

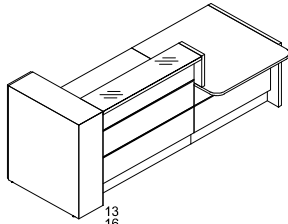
⚖️ net weight / Nettogewicht / poids net

📦 volume / Volumen / le volume

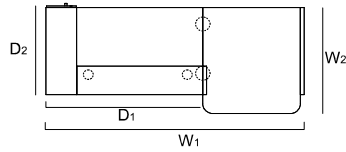
📦 number of packages / Stückzahl der Pakete / nombre de colis



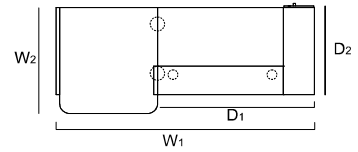
RECEPTION DESK SYSTEMS / EMPFANGSTHEKEN-SYSTEME / CONFIGURATIONS DES BANQUES



A



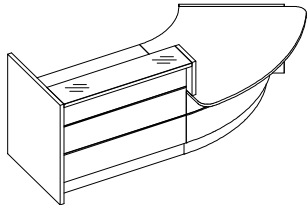
B



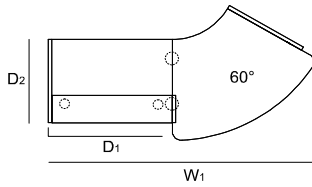
A: LAD10+LAP10+LA23L+NL41+LAN4L+LAU11L+LAN6L

B: LAN5P+LAU11L+NL41+LAN3P+LA23L+LAL10+LAD10

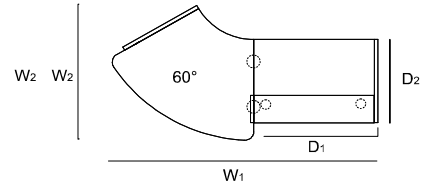
INDEX SYMBOL		DIMENSIONS / ABMESSUNGEN [mm]						⚖️	📦	📦		COMMENTS / BEMERKUNGEN / REMARQUES
A	B	W ₁	W ₂	D ₁	D ₂	H						
LAV41L ¹³	LAV42L ¹³	2646	1134	1608	937	1105		167.9	0.840	13		
LAV43L ¹⁶	LAV44L ¹⁶	2946	1134	1908	937	1105		171.8	0.875	13		
LAV45L ²³	LAV46L ²³	3646	1134	2608	937	1105		207.8	1.026	14		



A



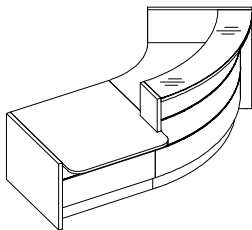
B



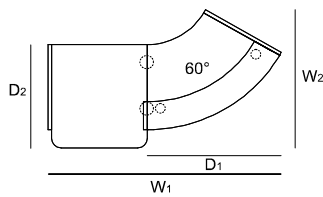
A: LAN1P+LA23L+NL41+LAN4L+LAV66L+LAN6L

B: LAN5P+LAV66L+NL41+LAN3P+LA23L+LAN2L

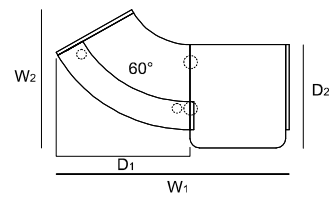
INDEX SYMBOL		DIMENSIONS / ABMESSUNGEN [mm]						⚖️	📦	📦		COMMENTS / BEMERKUNGEN / REMARQUES
A	B	W ₁	W ₂	D ₁	D ₂	H						
LAV88L ¹³	LAV89L ¹³	2845	1111	1328	917	1105		160.9	0.832	12		
LAV91L ¹⁶	LAV92L ¹⁶	3145	1111	1628	917	1105		174.3	0.879	12		
LAV93L ²³	LAV94L ²³	3845	1111	2318	917	1105		200.8	1.018	13		



A



B



A: LAN5P+LAU11L+NL41+LAN3P+LAV64L+LAN2L

B: LAN1P+LAV64L+NL41+LAN4L+LAU11L+LAN6L

INDEX SYMBOL		DIMENSIONS / ABMESSUNGEN [mm]						⚖️	📦	📦		COMMENTS / BEMERKUNGEN / REMARQUES
A	B	W ₁	W ₂	D ₁	D ₂	H						
LAV84L	LAV85L	2443	1489	1404	1114	1105		149.8	0.957	12		

DESCRIPTION / LEGENDE / LÉGENDE:

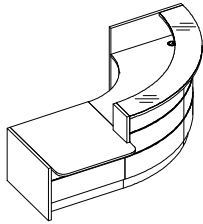
⚖️ net weight / Nettogewicht / poids net

📦 volume / Volumen / le volume

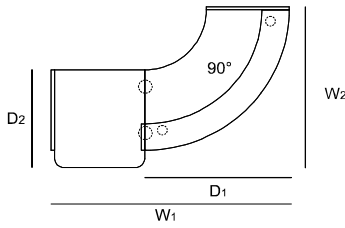
📦 number of packages / Stückzahl der Pakete / nombre de colis



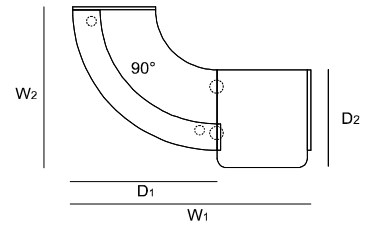
RECEPTION DESK SYSTEMS / EMPFANGSTHEKEN-SYSTEME / CONFIGURATIONS DES BANQUES



A

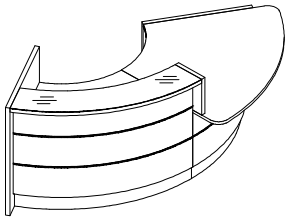


B

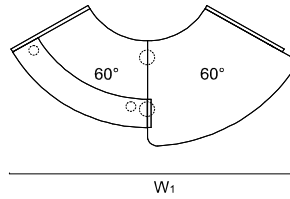


A: LAN5P+LAU11L+NL41+LAN3P+LAV90L+LAN2L
 B: LAN1P+LAV90L+NL41+LAN4L+LAU11L+LAN6L

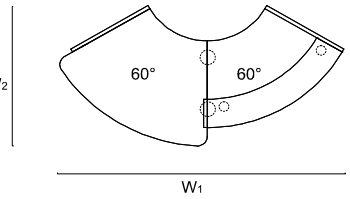
INDEX SYMBOL		DIMENSIONS / ABMESSUNGEN [mm]						⚖️	📦	📦		COMMENTS / BEMERKUNGEN / REMARQUES
A	B	W ₁	W ₂	D ₁	D ₂	H						
LAV86L	LAV87L	2638	1835	1600	937	1105	190.8	1.328	13			



A

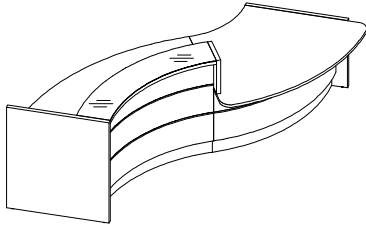


B

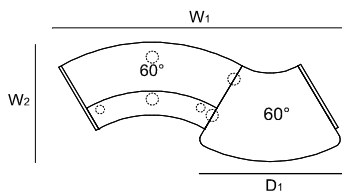


A: LAN1P+LAV64L+NL41+LAN4L+LAV66L+LAN6L
 B: LAN5P+LAV66L+NL41+LAN3P+LAV64L+LAN2L

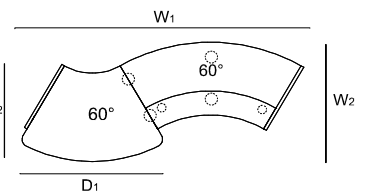
INDEX SYMBOL		DIMENSIONS / ABMESSUNGEN [mm]						⚖️	📦	📦		COMMENTS / BEMERKUNGEN / REMARQUES
A	B	W ₁	W ₂	D ₁	D ₂	H						
LAV30L	LAV31L	2922	1486	-	-	1105	171.8	1.280	12			



A



B



A: LAN1P+LAV62L+NL41+LAN4L+LAV66L+LAN6L
 B: LAN5P+LAV66L+NL41+LAN3P+LAV62L+LAN2L

INDEX SYMBOL		DIMENSIONS / ABMESSUNGEN [mm]						⚖️	📦	📦		COMMENTS / BEMERKUNGEN / REMARQUES
A	B	W ₁	W ₂	D ₁	D ₂	H						
LAV32L	LAV33L	3452	1502	1720	1225	1105	182.8	1.366	13			

DESCRIPTION / LEGENDE / LÉGENDE:

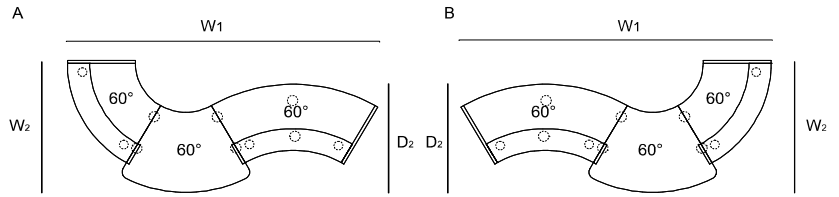
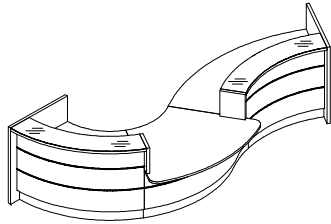
⚖️ net weight / Nettogewicht / poids net

📦 volume / Volumen / le volume

📦 number of packages / Stückzahl der Pakete / nombre de colis

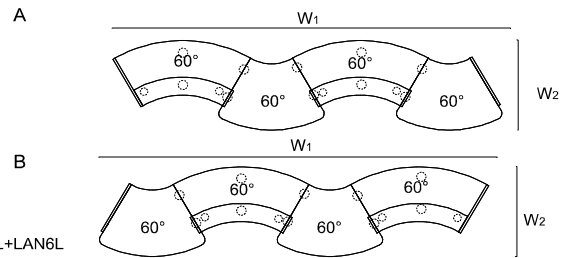
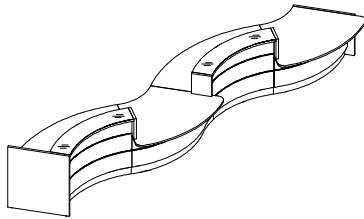


RECEPTION DESK SYSTEMS / EMPFANGSTHEKEN-SYSTEME / CONFIGURATIONS DES BANQUES



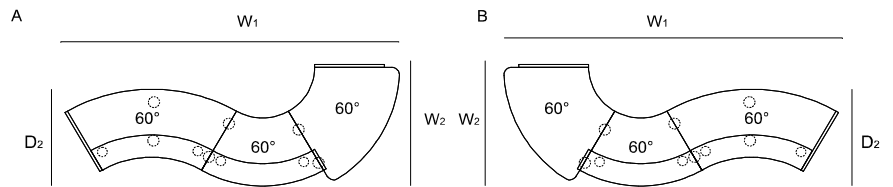
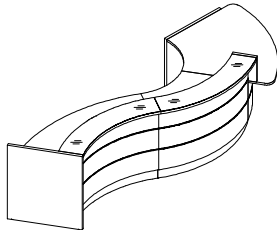
A: LAN1P+LAV64L+NL41+LAN4L+LAV66L+NL41+LAN3P+LAV62L+LAN2L
 B: LAN1P+LAV62L+NL41+LAN4L+LAV66L+NL41+LAN3P+LAV64L+LAN2L

INDEX SYMBOL		DIMENSIONS / ABMESSUNGEN [mm]						⚖️	📦	📦		COMMENTS / BEMERKUNGEN / REMARQUES
A	B	W ₁	W ₂	D ₁	D ₂	H						
LAV34L	LAV35L	4195	1835	-	1503	1105	262.1	2.129	20			



A: LAN1P+LAV62L+NL41+LAN4L+LAV66L+NL41+LAN3P+LAV62L+NL41+LAN4L+LAV66L+LAN6L
 B: LAN5P+LAV66L+NL41+LAN3P+LAV62L+NL41+LAN4L+LAV66L+NL41+LAN3P+LAV62L+LAN2L

INDEX SYMBOL		DIMENSIONS / ABMESSUNGEN [mm]						⚖️	📦	📦		COMMENTS / BEMERKUNGEN / REMARQUES
A	B	W ₁	W ₂	D ₁	D ₂	H						
LAV36L	LAV37L	6352	1503	-	-	1105	322.1	2.706	24			



A: LAN1P+LAV62L+NL41+LAV64L+NL41+LAN4L+LAV66L+LAN6L
 B: LAN5P+LAV66L+NL41+LAN3P+LAV64L+NL41+LAV62L+LAN2L

INDEX SYMBOL		DIMENSIONS / ABMESSUNGEN [mm]						⚖️	📦	📦		COMMENTS / BEMERKUNGEN / REMARQUES
A	B	W ₁	W ₂	D ₁	D ₂	H						
LAV38L	LAV39L	4386	1639	-	1307	1105	252.3	2.106	19			

DESCRIPTION / LEGENDE / LÉGENDE:

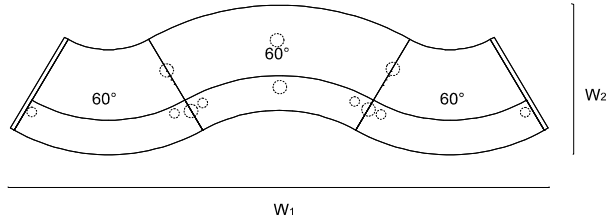
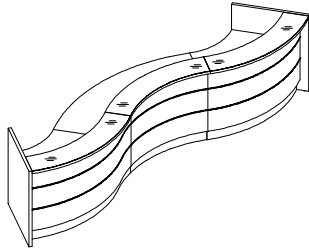
⚖️ net weight / Nettogewicht / poids net

📦 volume / Volumen / le volume

📦 number of packages / Stückzahl der Pakete / nombre de colis

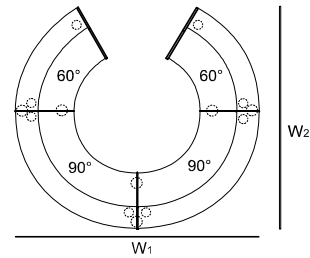
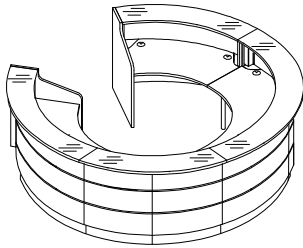


RECEPTION DESK SYSTEMS / EMPFANGSTHEKEN-SYSTEME / CONFIGURATIONS DES BANQUES



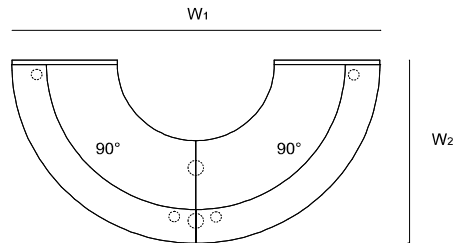
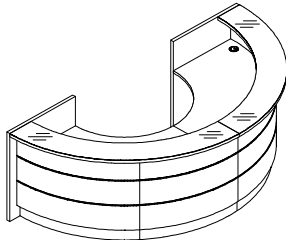
LAN1P+LAV64L+NL41+LAV62L+NL41+LAV64L+LAN2L

INDEX SYMBOL	DIMENSIONS / ABMESSUNGEN [mm]										COMMENTS / BEMERKUNGEN / REMARQUES
	W ₁	W ₂	D ₁	D ₂	H						
LAV50L	4566	1307	-	-	1105		269.5	2.345	20		



LWN1P+LWC64L+NL41+LWC90L+NL41+LWC90L+NL41+LWC64L+LWN2L

INDEX SYMBOL	DIMENSIONS / ABMESSUNGEN [mm]										COMMENTS / BEMERKUNGEN / REMARQUES
	W ₁	W ₂	D ₁	D ₂	H						
LAV51L	3202	3006	-	-	1105		410.0	3.741	27		



LAN1P+LAV90L+NL41+LAV90L+LAN2L

INDEX SYMBOL	DIMENSIONS / ABMESSUNGEN [mm]										COMMENTS / BEMERKUNGEN / REMARQUES
	W ₁	W ₂	D ₁	D ₂	H						
LAV52L	3202	1639	-	-	1105		271.0	2.261	15		

DESCRIPTION / LEGENDE / LÉGENDE:

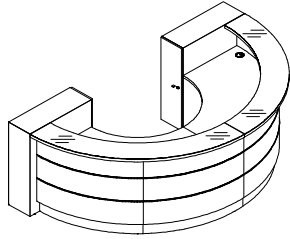
net weight / Nettogewicht / poids net

volume / Volumen / le volume

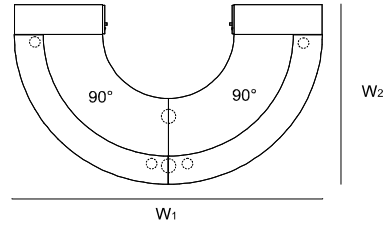
number of packages / Stückzahl der Pakete / nombre de colis



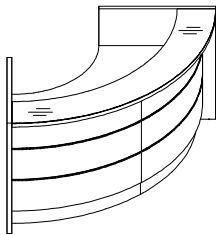
RECEPTION DESK SYSTEMS / EMPFANGSTHEKEN-SYSTEME / CONFIGURATIONS DES BANQUES



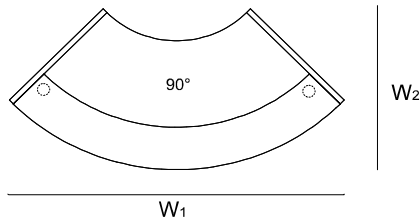
LAD10+LAP10+LAV90L+NL41+LAV90L+LAL10+LAD10



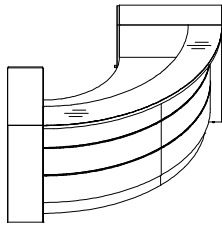
INDEX SYMBOL	DIMENSIONS / ABMESSUNGEN [mm]									COMMENTS / BEMERKUNGEN / REMARQUES
	W ₁	W ₂	D ₁	D ₂	H		kg	m ³	pcs	
LAV61L	3202	1919	-	-	1105		329.0	2.923	17	



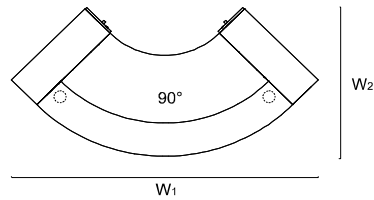
LAN1P+LAV90L+LAN2L



INDEX SYMBOL	DIMENSIONS / ABMESSUNGEN [mm]									COMMENTS / BEMERKUNGEN / REMARQUES
	W ₁	W ₂	D ₁	D ₂	H		kg	m ³	pcs	
LAV53L	2317	1145	-	-	1105		162.5	1.213	9	



LAD10+LAP10+LAV90L+LAL10+LAD10



INDEX SYMBOL	DIMENSIONS / ABMESSUNGEN [mm]									COMMENTS / BEMERKUNGEN / REMARQUES
	W ₁	W ₂	D ₁	D ₂	H		kg	m ³	pcs	
LAV73L	2713	1353	-	-	1105		218.5	1.813	10	

DESCRIPTION / LEGENDE / LÉGENDE:

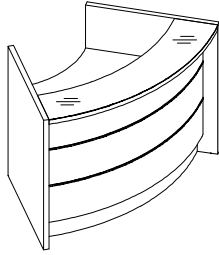
net weight / Nettogewicht / poids net

volume / Volumen / le volume

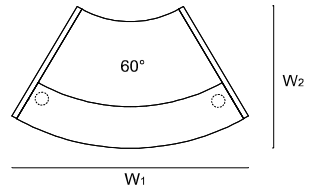
number of packages / Stückzahl der Pakete / nombre de colis



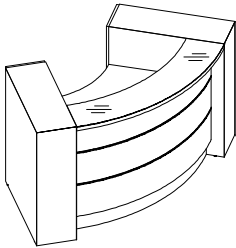
RECEPTION DESK SYSTEMS / EMPFANGSTHEKEN-SYSTEME / CONFIGURATIONS DES BANQUES



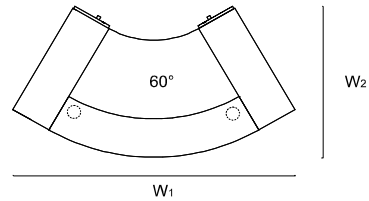
LAN1P+LAV64L+LAN2L



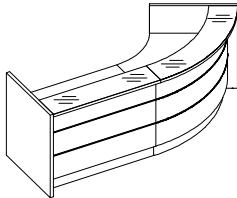
INDEX SYMBOL	DIMENSIONS / ABMESSUNGEN [mm]										COMMENTS / BEMERKUNGEN / REMARQUES
	W ₁	W ₂	D ₁	D ₂	H						
LAV54L	1666	1029	-	-	1105		119.5	0.779	7		



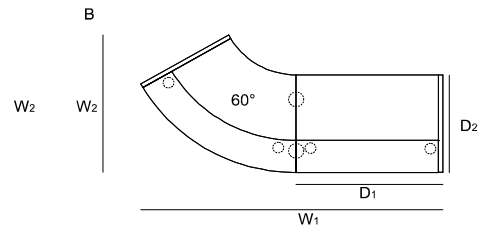
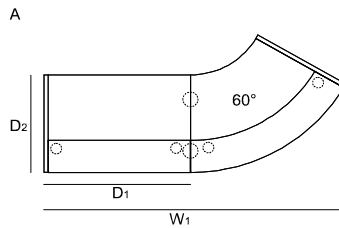
LAD10+LAP10+LAV64L+LAL10+LAD10



INDEX SYMBOL	DIMENSIONS / ABMESSUNGEN [mm]										COMMENTS / BEMERKUNGEN / REMARQUES
	W ₁	W ₂	D ₁	D ₂	H						
LAV74L	2151	1183	-	-	1105		177.5	1.442	9		



A: LAN1P+LA¹³_{23L}+NL41+LAV64L+LAN2L
 B: LAN1P+LAV64L+NL41+LA¹³_{23L}+LAN2L



INDEX SYMBOL		DIMENSIONS / ABMESSUNGEN [mm]										COMMENTS / BEMERKUNGEN / REMARQUES
A	B	W ₁	W ₂	D ₁	D ₂	H						
LAV78L ¹³	LAV79L ¹³	2733	1292	1328	917	1105		178.1	1.071	13		
LAV80L ¹⁶	LAV81L ¹⁶	3033	1292	1628	917	1105		191.5	1.118	13		
LAV82L ²³	LAV83L ²³	3733	1292	2318	917	1105		218.0	1.257	14		

DESCRIPTION / LEGENDE / LÉGENDE:

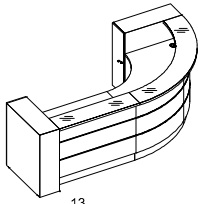
net weight / Nettogewicht / poids net

volume / Volumen / le volume

number of packages / Stückzahl der Pakete / nombre de colis

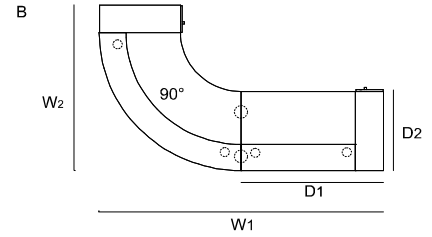
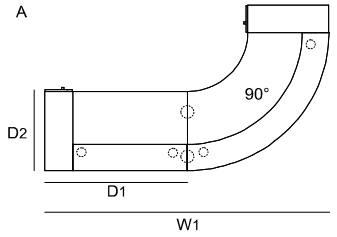


RECEPTION DESK SYSTEMS / EMPFANGSTHEKEN-SYSTEME / CONFIGURATIONS DES BANQUES

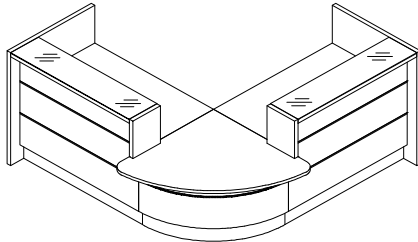


A: LAD10+LAP10+LA23L+NL41+LAV90L+LAL10+LAD10

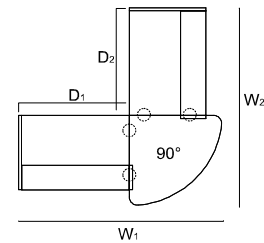
B: LAD10+LAP10+LAV90L+NL41+LA23L+LAL10+LAD10



INDEX SYMBOL		DIMENSIONS / ABMESSUNGEN [mm]						kg	m3	pcs	COMMENTS / BEMERKUNGEN / REMARQUES
A	B	W ₁	W ₂	D ₁	D ₂	H					
LAV55L ¹³	LAV56L ¹³	3208	1918	1608	937	1105	277.1	2.104	16		
LAV57L ¹⁶	LAV58L ¹⁶	3508	1918	1908	937	1105	290.5	2.151	16		
LAV59L ²³	LAV60L ²³	4208	1918	2608	937	1105	317.0	2.291	17		



LAN1P+LA23L+NL41+LAN4L+LAV68L+NL41+LAN3P+LA23L+LAN2L



INDEX SYMBOL		DIMENSIONS / ABMESSUNGEN [mm]						kg	m3	pcs	COMMENTS / BEMERKUNGEN / REMARQUES
		W ₁	W ₂	D ₁	D ₂	H					
LAV101L ¹³	LAV101L ¹³	2437	2437	1328	1328	1105	207.3	0.955	18		
LAV102L ¹³	LAV102L ¹⁶	2437	2737	1328	1628	1105	220.7	1.002	18		
LAV103L ¹³	LAV103L ²³	2437	3437	1328	2318	1105	247.2	1.141	19		
LAV104L ¹⁶	LAV104L ¹³	2737	2437	1628	1328	1105	220.7	1.002	18		
LAV105L ¹⁶	LAV105L ¹⁶	2737	2737	1628	1628	1105	234.1	1.049	18		
LAV106L ¹⁶	LAV106L ²³	2737	3437	1628	2318	1105	260.6	1.189	19		
LAV107L ²³	LAV107L ¹³	3437	2437	2318	1328	1105	247.2	1.141	19		
LAV108L ²³	LAV108L ¹⁶	3437	2737	2318	1628	1105	260.6	1.189	19		
LAV109L ²³	LAV109L ²³	3437	3437	2318	2318	1105	285.6	1.311	19		

DESCRIPTION / LEGENDE / LÉGENDE:

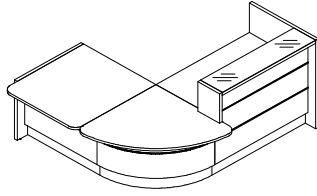
net weight / Nettogewicht / poids net

volume / Volumen / le volume

number of packages / Stückzahl der Pakete / nombre de colis

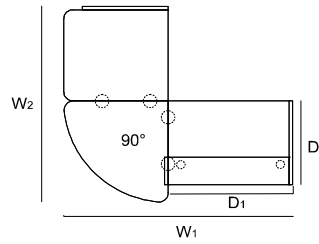


RECEPTION DESK SYSTEMS / EMPFANGSTHEKEN-SYSTEME / CONFIGURATIONS DES BANQUES

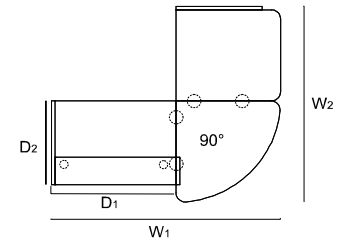


A: LAN5+LAU11L+NL41+LAV68L+NL41+LAN3+LA23L+LAN2¹³
 B: LAN1+LA23L+NL41+LAN4+LAV68L+NL41+LAN11L+LAN6¹³

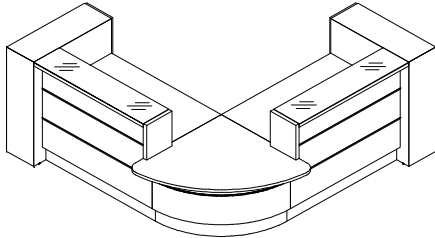
A



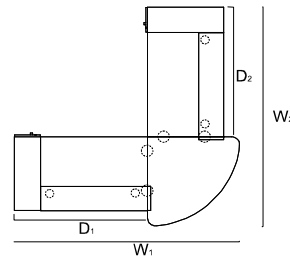
B



INDEX SYMBOL		DIMENSIONS / ABMESSUNGEN [mm]						kg	m ³	pcs	COMMENTS / BEMERKUNGEN / REMARQUES
A	B	W ₁	W ₂	D ₁	D ₂	H					
LAV110L ¹³	LAV111L ¹³	2442	2147	1328	917	1105	176.4	0.832	16		
LAV112L ¹⁶	LAV113L ¹⁶	2742	2147	1628	917	1105	189.8	0.879	16		
LAV114L ²³	LAV115L ²³	3442	2147	2318	917	1105	216.3	1.019	17		



LAD10+LAP10+LA23L+NL41+LAN4L+LAV68L+NL41+LAN3P+LA23L+LAL10+LAD10¹³



INDEX SYMBOL		DIMENSIONS / ABMESSUNGEN [mm]						kg	m ³	pcs	COMMENTS / BEMERKUNGEN / REMARQUES
		W ₁	W ₂	D ₁	D ₂	H					
LAV116L ¹³	LAV116L ¹³	2717	2717	1608	1608	1105	265.3	1.617	20		
LAV117L ¹³	LAV117L ¹⁶	2717	3017	1608	1908	1105	278.7	1.664	20		
LAV118L ¹³	LAV118L ²³	2717	3717	1608	2608	1105	305.2	1.804	21		
LAV119L ¹⁶	LAV119L ¹³	3017	2717	1908	1608	1105	278.7	1.664	20		
LAV120L ¹⁶	LAV120L ¹⁶	3017	3017	1908	1908	1105	292.1	1.711	20		
LAV121L ¹⁶	LAV121L ²³	3017	3717	1908	2608	1105	318.6	1.851	21		
LAV122L ²³	LAV122L ¹³	3717	2717	2608	1608	1105	305.2	1.804	21		
LAV123L ²³	LAV123L ¹⁶	3717	3017	2608	1908	1105	318.6	1.851	21		
LAV124L ²³	LAV124L ²³	3717	3717	2608	2608	1105	343.6	1.973	21		

DESCRIPTION / LEGENDE / LÉGENDE:

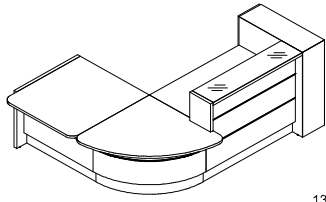
net weight / Nettogewicht / poids net

volume / Volumen / le volume

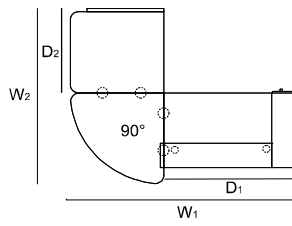
number of packages / Stückzahl der Pakete / nombre de colis



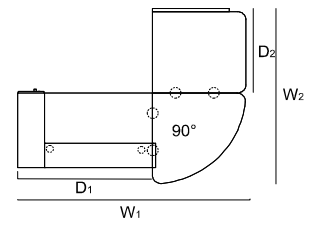
RECEPTION DESK SYSTEMS / EMPFANGSTHEKEN-SYSTEME / CONFIGURATIONS DES BANQUES



A



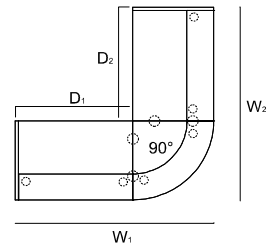
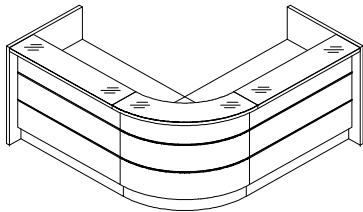
B



A: LAN5P+LAU11L+NL41+LAV68L+NL41+LAN3+LA23L+LAL10+LAD10

B: LAD10+LAP10+LA23L+NL41+LAN4L+LAV68L+NL41+LAU11L+LAN6L

INDEX SYMBOL		DIMENSIONS / ABMESSUNGEN [mm]						kg	m3	pcs	COMMENTS / BEMERKUNGEN / REMARQUES
A	B	W ₁	W ₂	D ₁	D ₂	H					
LAV125L ¹³	LAV126L ¹³	2722	2147	1608	1038	1105	210.4	1.181	18		
LAV127L ¹⁶	LAV128L ¹⁶	3022	2147	1908	1038	1105	214.8	1.204	17		
LAV129L ²³	LAV130L ²³	3722	2147	2608	1038	1105	245.3	1.350	18		



LAN1P+LA23L+NL41+LAV70L+NL41+LA23L+LAN2L

INDEX SYMBOL		DIMENSIONS / ABMESSUNGEN [mm]						kg	m3	pcs	COMMENTS / BEMERKUNGEN / REMARQUES
		W ₁	W ₂	D ₁	D ₂	H					
LAV131L ¹³	LAV131L ¹³	2245	2245	1328	1328	1105	209.7	1.041	17		
LAV132L ¹³	LAV132L ¹⁶	2245	2545	1328	1628	1105	223.1	1.088	17		
LAV133L ¹³	LAV133L ²³	2245	3245	1328	2318	1105	249.6	1.228	18		
LAV134L ¹⁶	LAV134L ¹³	2545	2245	1628	1328	1105	223.1	1.088	17		
LAV135L ¹⁶	LAV135L ¹⁶	2545	2545	1628	1628	1105	236.5	1.136	17		
LAV136L ¹⁶	LAV136L ²³	2545	3245	1628	2318	1105	263.0	1.275	18		
LAV137L ²³	LAV137L ¹³	3245	2245	2318	1328	1105	249.6	1.228	18		
LAV138L ²³	LAV138L ¹⁶	3245	2545	2318	1628	1105	263.0	1.275	18		
LAV139L ²³	LAV139L ²³	3245	3245	2318	2318	1105	288.0	1.397	18		

DESCRIPTION / LEGENDE / LÉGENDE:

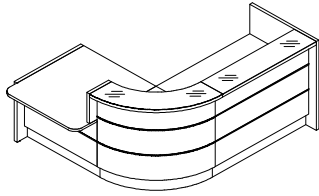
net weight / Nettogewicht / poids net

volume / Volumen / le volume

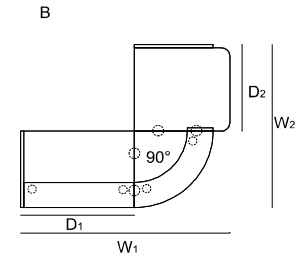
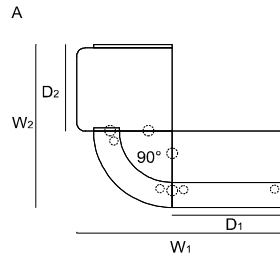
number of packages / Stückzahl der Pakete / nombre de colis



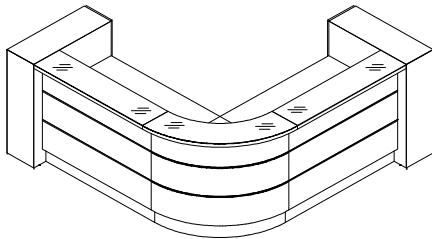
RECEPTION DESK SYSTEMS / EMPFANGSTHEKEN-SYSTEME / CONFIGURATIONS DES BANQUES



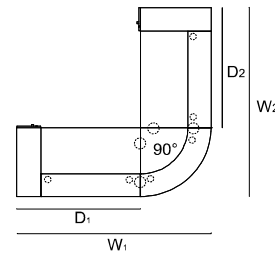
A: LAN5P+LAU11L+NL41+LAN3P+LAN70L+NL41+LA23L+LAN2L
 B: LAN1P+LA23L+NL41+LAV70L+NL41+LAN4L+LAU11L+LAN6L



INDEX SYMBOL		DIMENSIONS / ABMESSUNGEN [mm]						kg	m3	pcs	COMMENTS / BEMERKUNGEN / REMARQUES
A	B	W ₁	W ₂	D ₁	D ₂	H					
LAV140L ¹³	LAV141L ¹³	2442	1955	1328	1038	1105	184.4	0.933	17		
LAV142L ¹⁶	LAV143L ¹⁶	2742	1955	1628	1038	1105	197.8	0.980	17		
LAV144L ²³	LAV145L ²³	3442	1955	2318	1038	1105	224.3	1.119	18		



LAD10+LAP10+LA23L+NL41+LAV70L+NL41+LA23L+LAL10+LAD10



INDEX SYMBOL		DIMENSIONS / ABMESSUNGEN [mm]						kg	m3	pcs	COMMENTS / BEMERKUNGEN / REMARQUES
		W ₁	W ₂	D ₁	D ₂	H					
LAV146L ¹³	LAV146L ¹³	2525	2525	1608	1608	1105	267.7	1.704	19		
LAV147L ¹³	LAV147L ¹⁶	2525	2825	1608	1908	1105	281.1	1.751	19		
LAV148L ¹³	LAV148L ²³	2525	3525	1608	2608	1105	307.6	1.890	20		
LAV149L ¹⁶	LAV149L ¹³	2825	2525	1908	1608	1105	281.1	1.751	19		
LAV150L ¹⁶	LAV150L ¹⁶	2825	2825	1908	1908	1105	294.5	1.798	19		
LAV151L ¹⁶	LAV151L ²³	2825	3525	1908	2608	1105	321.0	1.937	20		
LAV152L ²³	LAV152L ¹³	3525	2525	2608	1608	1105	307.6	1.890	20		
LAV153L ²³	LAV153L ¹⁶	2525	2825	2608	1908	1105	321.0	1.937	20		
LAV154L ²³	LAV154L ²³	3525	3525	2608	2608	1105	346.0	2.060	20		

DESCRIPTION / LEGENDE / LÉGENDE:

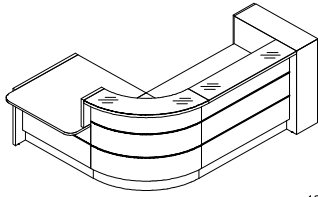
net weight / Nettogewicht / poids net

volume / Volumen / le volume

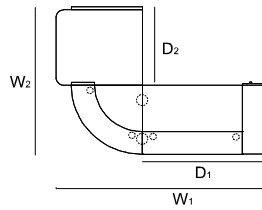
number of packages / Stückzahl der Pakete / nombre de colis



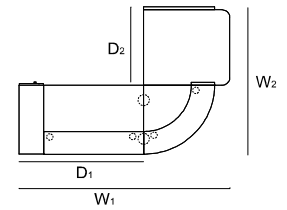
RECEPTION DESK SYSTEMS / EMPFANGSTHEKEN-SYSTEME / CONFIGURATIONS DES BANQUES



A:



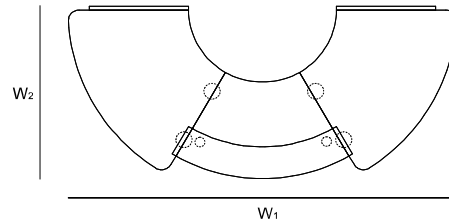
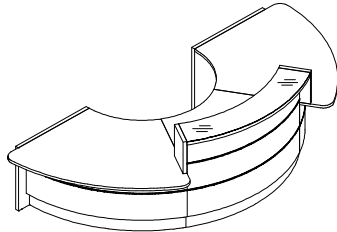
B:



A: LAN5P+LAU11L+NL41+LAN3P+LWC70L+NL41+LW23L+LWL10+LWD10

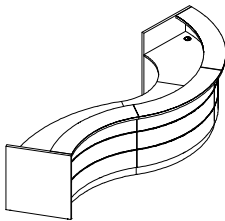
B: LWD10+LWP10+LW23L+NL41+LWC70L+NL41+LWN4L+LWU11L+LWN6L

INDEX SYMBOL		DIMENSIONS / ABMESSUNGEN [mm]						kg	m3	pcs	COMMENTS / BEMERKUNGEN / REMARQUES
A	B	W ₁	W ₂	D ₁	D ₂	H					
LAV155L ¹³	LAV156L ¹³	2722	1955	1608	1038	1105	218.4	1.282	19		
LAV157L ¹⁶	LAV158L ¹⁶	3022	1955	1908	1038	1105	222.8	1.305	18		
LAV159L ²³	LAV160L ²³	3722	1955	2608	1038	1105	253.3	1.451	19		

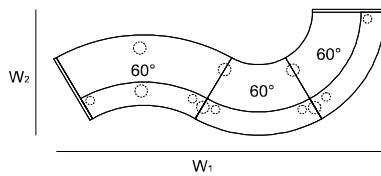


LAN5P+LAV66L+LAN3P+NL41+LAV64L+LAN4L+NL41+LAV66L+LAN6L

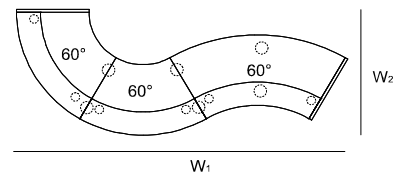
INDEX SYMBOL		DIMENSIONS / ABMESSUNGEN [mm]						kg	m3	pcs	COMMENTS / BEMERKUNGEN / REMARQUES
A	B	W ₁	W ₂	D ₁	D ₂	H					
LAV05L		3589	1629	-	-	1105	224.1	1.781	17		



A:



B:



A: LAN1P+LAV62L+NL41+LAV64L+NL41+LAV64L+LAN2L

B: LAN1P+LAV64L+NL41+LAV64L+NL41+LAV62L+LAN2L

INDEX SYMBOL		DIMENSIONS / ABMESSUNGEN [mm]						kg	m3	pcs	COMMENTS / BEMERKUNGEN / REMARQUES
A	B	W ₁	W ₂	D ₁	D ₂	H					
LAV06L	LAV07L	4199	1629	-	-	1105	269.5	2.345	20		

DESCRIPTION / LEGENDE / LÉGENDE:

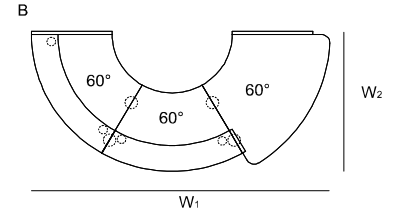
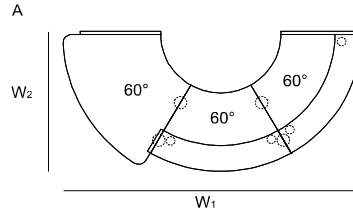
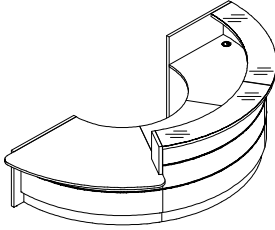
net weight / Nettogewicht / poids net

volume / Volumen / le volume

number of packages / Stückzahl der Pakete / nombre de colis



RECEPTION DESK SYSTEMS / EMPFANGSTHEKEN-SYSTEME / CONFIGURATIONS DES BANQUES



A: LAN5P+LAV66L+NL41+LAN3P+LAV64L+NL41+LAV64L+LAN2L
 B: LAN1P+LAV64L+NL41+LAV64L+NL41+LAN4L+LAV66L+LAN6L

INDEX SYMBOL		DIMENSIONS / ABMESSUNGEN [mm]						kg	m3	pcs		COMMENTS / BEMERKUNGEN / REMARQUES
A	B	W ₁	W ₂	D ₁	D ₂	H						
LAV08L	LAV09L	3367	1629	-	-	1105	235.3	2.009	16			

DESCRIPTION / LEGENDE / LÉGENDE:

net weight / Nettogewicht / poids net

volume / Volumen / le volume

number of packages / Stückzahl der Pakete / nombre de colis



PRODUCT ILLUSTRATION / PRODUKTANSICHT UND SKIZZE / VUE DE PRODUIT	DIMENSIONS / ABMESSUNGEN [mm]			INDEX SYMBOL						COMMENTS / BEMERKUNGEN / REMARQUES
	WIDTH / BREITE / LARGEUR	DEPTH / TIEFE / PROFONDEUR	HEIGHT / HÖHE / HAUTEUR			kg	m3	pcs		

STRAIGHT ELEMENTS / GERADE BAUTEILE / ÉLÉMENTS COMPOSANTS SIMPLES

	844	917	1105	LA09L		37.0	0.153	6		
	1290	917	1105	LA13L		57.6	0.233	7		
	1590	917	1105	LA16L		71.0	0.280	7		
	2290	917	1105	LA23L		97.5	0.419	8		
	1290	917	1105	LAP13L		56.6	0.233	7		
	1590	917	1105	LAP16L		70.5	0.280	7		
	2290	917	1105	LAP23L		97.0	0.419	8		Worktop with NE41 / Arbeitsplatte mit NE41 / Plan de travail avec NE41
	1290	917	1105	LAL13L		56.6	0.233	7		
	1590	917	1105	LAL16L		70.5	0.280	7		
	2290	917	1105	LAL23L		97.0	0.419	8		
	1000	1114	740	LAU11L		33.5	0.128	5		







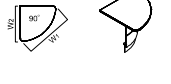



DESCRIPTION / LEGENDE / LÉGENDE:

net weight / Nettogewicht / poids net

volume / Volumen / le volume

number of packages / Stückzahl der Pakete / nombre de colis



PRODUCT ILLUSTRATION / PRODUKTANSICHT UND SKIZZE / VUE DE PRODUIT	DIMENSIONS / ABMESSUNGEN [mm]			INDEX SYMBOL						COMMENTS / BEMERKUNGEN / REMARQUES
	WIDTH / BREITE / LARGEUR	DEPTH / TIEFE / PROFONDEUR	HEIGHT / HÖHE / HAUTEUR			kg	m3	pcs		
	2216	917	1105	LAV62L		79.5	0.767	8		
	1600	917	1105	LAV64L		68.5	0.681	7		
	1720	1109	740	LAV66L		54.5	0.446	3		
	1485	1109	740	LAV68L		35.5	0.260	3		
	1297	917	1105	LAV70L		43.5	0.361	4		
	2264	917	1105	LAV90L		137.5	1.128	9		
	1225	917	1105	LAV63L		54.5	0.506	6		

DESCRIPTION / LEGENDE / LÉGENDE:

 net weight / Nettogewicht / poids net

 volume / Volumen / le volume

 number of packages / Stückzahl der Pakete / nombre de colis



PRODUCT ILLUSTRATION / PRODUKTANSICHT UND SKIZZE / VUE DE PRODUIT	DIMENSIONS / ABMESSUNGEN [mm]			INDEX SYMBOL		kg	m3	pcs		COMMENTS / BEMERKUNGEN / REMARQUES
	WIDTH / BREITE / LARGEUR	DEPTH / TIEFE / PROFONDEUR	HEIGHT / HÖHE / HAUTEUR							

ELEMENTS / BAUTEILE / ÉLÉMENTS COMPOSANTS

	300	300	1105	LA100		22.2	0.115	1		- corner unit / - Würfel Fuß / - monobloc fermé
	318	917	1105	LAP10		50.0	0.364	1		- end unit with cupboard, right, only for high units ! / - Seitenschrank, Recht, nur für hohe Empfangstheken ! / - monobloc à étagères, droit, seulement pour éléments hauts !
	318	917	1105	LAL10		50.0	0.364	1		- end unit with cupboard, left, only for high units ! / - Seitenschrank, Links, nur für hohe Empfangstheken ! / - monobloc à étagères, gauche, seulement pour éléments hauts !
	306	20	1088	LAD10		5.0	0.018	1		- door for LWP10 and LWL10 / - Tür mit Verschluss zum LWP10, LWL10 / - porte pour LWP10 et LWL10
	38	917	1105	LAN1P		26.0	0.051	1		side panel for high units, right / - Wangenfuß, Recht / - pied coté droit des éléments hauts
	38	917	1105	LAN2L		26.0	0.051	1		- side panel for high units, left / - Wangenfuß, Links / - pied coté gauchedés éléments hauts
	38	300	364	LAN3P		2.8	0.007	1		- right upper sidepanel / - Endungselent, Recht / - élément de finition de la rehausse, droit
	38	300	364	LAN4L		2.8	0.007	1		- left upper sidepanel / - Endungselent, Links / - élément de finition de la rehausse, gauche

DESCRIPTION / LEGENDE / LÉGENDE:

net weight / Nettogewicht / poids net

volume / Volumen / le volume

number of packages / Stückzahl der Pakete / nombre de colis



PRODUCT ILLUSTRATION / PRODUKTANSICHT UND SKIZZE / VUE DE PRODUIT	DIMENSIONS / ABMESSUNGEN [mm]			INDEX SYMBOL						COMMENTS / BEMERKUNGEN / REMARQUES
	WIDTH / BREITE / LARGEUR	DEPTH / TIEFE / PROFONDEUR	HEIGHT / HÖHE / HAUTEUR			kg	m3	pcs		

ELEMENTS / BAUTEILE / ÉLÉMENTS COMPOSANTS

	38	917	740	LAN5P		19.0	0.036	1		- right lower sidepanel / - Wangenfuß niedrig,Recht / - pied de la banquettepour leshandicapésés,dront
	38	917	740	LAN6L		19.0	0.036	1		- left lower side panel / - Wangenfuß niedrig,Links / - pied de la banquettepour leshandicapésés,gauche
	345	283	314	LMS05		5.0	0.031	1		
	339	18	286	LMS06		2.0	0.005	1		
	585	142	690	NL41		2.0	0.063	1		
	40	40	712	NE41		1.5	0.017	1		straight leg / Rundfuß / pied tube
	140	70	750	S81		1.1	0.008	1		- vertical cable ductin colour 09-aluminium / Kabelführung (Wirbelsäule) Farbe 09 - Aluminium / passe-cables colonne verticale
	460	70	87	E64		0.0	0.000	0		horizontal cable tray 09-aluminium / Kabelkanal 09 - Aluminium / bac à câble - 09 aluminium

DESCRIPTION / LEGENDE / LÉGENDE:

net weight / Nettogewicht / poids net

volume / Volumen / le volume

number of packages / Stückzahl der Pakete / nombre de colis